



DocuVision® 8600 T

Web Inspection System for
HP Color Inkjet Web Presses



Figure 1.1



Figure 1.2



Empowering Superior Customer Service and a Competitive Edge – With Benefits to Your Bottom Line

The **Videk DocuVision 8600 T** is a real-time variable content verification and data management system for for the HP T-series of High-Speed Color Inkjet Web Presses. Powered by Videk's DocuVision® platform, the **DocuVision 8600 T** combines a high-resolution vision system, powerful image analysis software, robust data management utilities, and an easy to use operator interface -all in modular solutions designed specifically for the HP T-series platforms.

The result is that operations are empowered to assure variable data accuracy and security, while tracking critical production information – leading to superior customer service and a competitive edge for your business.

- Ensure the security of personal information on each and every printed image
- Reduce waste and operate “greener” through immediate detection and responsive action to production errors – saving paper, ink and production time.
- Assure all work sent to finishing can be processed accurately and efficiently



Features:

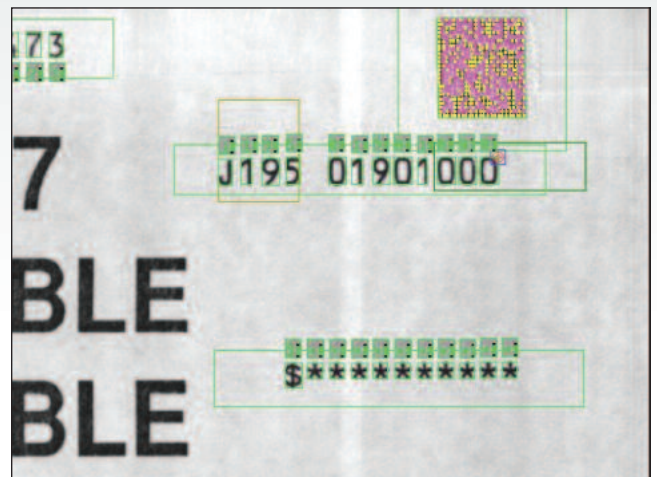
- Purpose-built production integrity assurance system
- Full 20", 30" or 42" web width scanning
- Automated page-level content verification
- Intuitive web viewing tools
- Robust production reporting utilities
- Informative, highly visible error alerts

Real-time Content Verification for today's and tomorrow's data-driven digital applications

The **DocuVision 8600 T** is optimized for print service providers with data-driven, High-Volume Transactional, TransPromo and Commercial applications who need to ensure the accuracy, security and quality of every image - all while managing accountability of variable information. Users are empowered with an extensive suite of variable content inspection utilities including:

- 1D, 2D and Postal barcode reading, and quality verification
- OCR reading and quality grading, including MICR
- Front-to-back matching
- Presence or absence detection for artifacts such as logos
- Missing or duplicate image detection and tracking

Error detection thresholds are fully user-defined, enabling the **DocuVision 8600 T** to be configured to most effectively monitor your mission-critical criteria and help manage conditions appropriately – whether that means alerting an operator, or communicating with enterprise ADF systems to enhance intelligent production processes.



Read virtually any data carrier to verify content, collect information or enable applications such as front-to-back matching.




Streaming Video Feed of the Web

The **DocuVision 8600 T** helps to overcome the barriers to production monitoring faced by operators in today's high-speed, roll-to-roll production environments. Providing a live video feed of the web, and tools to enable detailed visual inspection of individual images on-the-fly, operators have a real-time digital view of their jobs as they are being printed. Capabilities include:

- Virtual "pausing" of the web to view individual images
- Full page viewing – across the entire web, simplex and duplex
- Zoom-in and Zoom-out for detailed visual inspection

Intuitive operator interface and 19" display enable detailed production viewing, digitally and in real-time.





SERVICE ADDRESS
Sheldon Kruger
131 Infrmary Way, C/O 2
Andover MA 01920-9267

BILING PERIOD
September 22, 2010 to October 20, 2010

ACCOUNT NUMBER
22.00000

DATE DUE
NOV 17, 2010




PAGE
4 OF 6

AMOUNT DUE
\$97.46

Your air conditioning usage appears to be higher than your neighbors.
We can help by raising your thermostat (and lowering your rate *during peak times*). You can expect 3% to 7% savings for every degree increase.

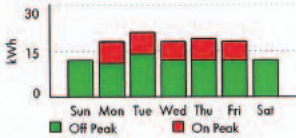
You also need a well maintained cooling unit. You can take simple steps like cleaning and changing your filter. We recommend professional service at least once per year. When buying a new appliance, look for the ENERGY STAR® label.

Select an alternative energy source!
You can have some or all of your electricity supplied from renewable wind, solar or tidal sources. It is a small marginal investment that will benefit our generations to come.

Go to www.pb.com for the latest rates and enrollment.

Average electricity usage by day



As you can see from this chart, you have significant usage during peak times. Peak times carry a higher electricity rate. Let's focus on this.

A Peak time thermostat adjustment can save an estimated \$64 next month!
Your average peak time cooling setting is 72°. Let us adjust your thermostat during peak times by just 3 degrees and you enjoy the savings.

	Your Average	Our Adjustment
Thermostat setting	72°	75°
Rate	\$0.0018	\$0.0014
Expected cost	\$192	\$128
Expected savings	\$64	

Opt in at www.pb.com

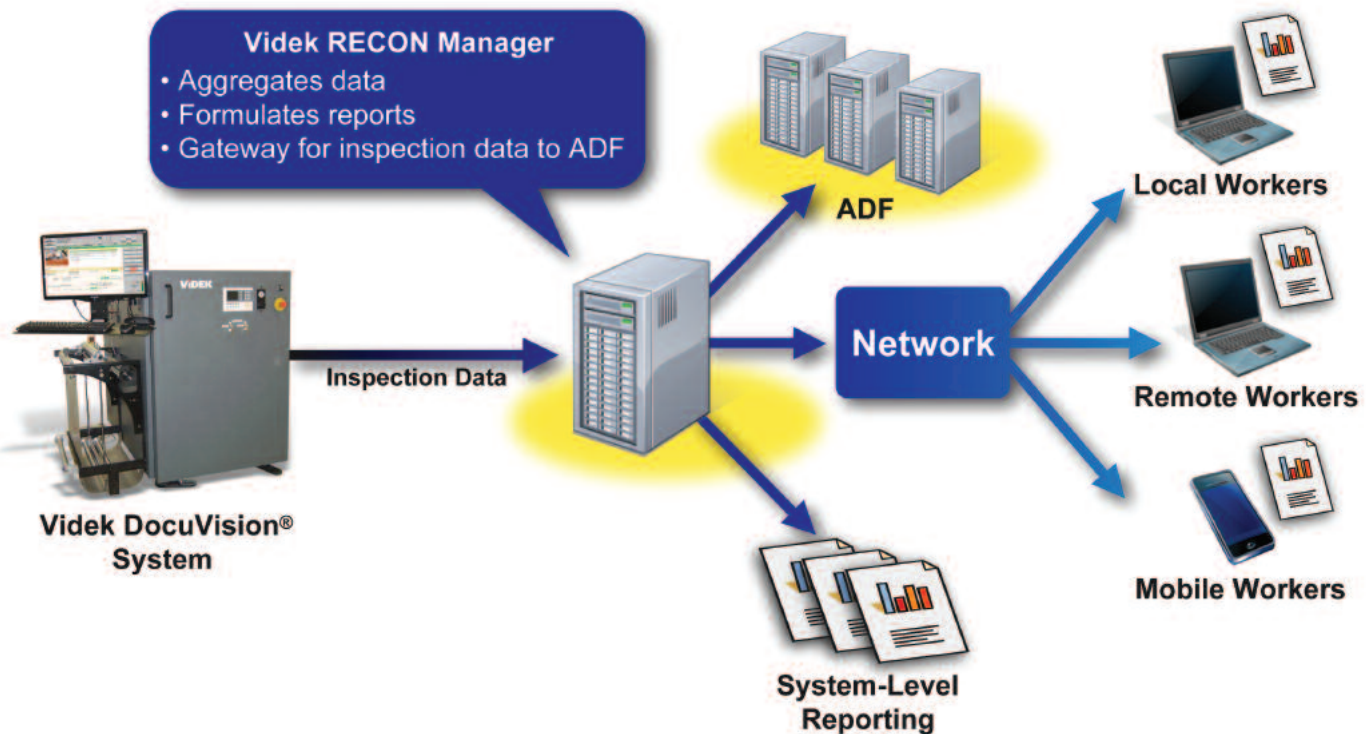
Original Image



Data for Smarter Digital Workflows

When combined with Videk's RECON Manager data collection and reporting utility, the **DocuVision 8600 T** can collect information such as barcode data, image sequencing, and defect logs for detailed production reporting. All of which can then be accessed locally, via a network, or fed into enterprise ADF platforms for enhanced operational intelligence. Common applications include:

- Tracking of missing or duplicate images – streamlining re-print processes and ensuring job integrity
- Variable data integrity assurance for one-to-one messaging applications
- Proof of work reporting – validating all intended output was produced
- Production auditing & accounting – for high-value or negotiable documents, such as checks



To learn more, visit www.videk.com/8600T